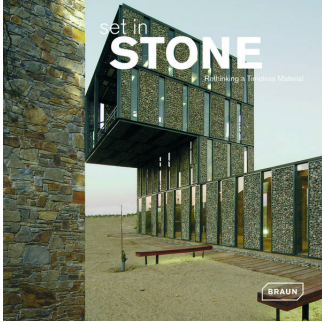


“School Cafeteria Ilsede” / publication in “Set in Stone”, Verlagshaus Braun, 2008



School canteen, 2008
Address: Am Schulzentrum 35, 31241 Ilsede,
Germany. Client: District of Peine. Gross floor area:
1,887 m². Materials: brick in cross-joint construction.

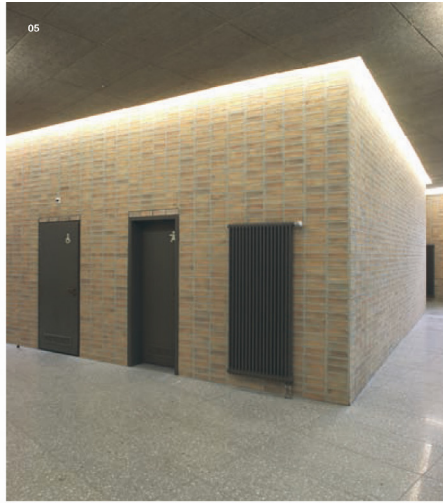
Legendary virtues

ARCHITECTS: Despang Architekten

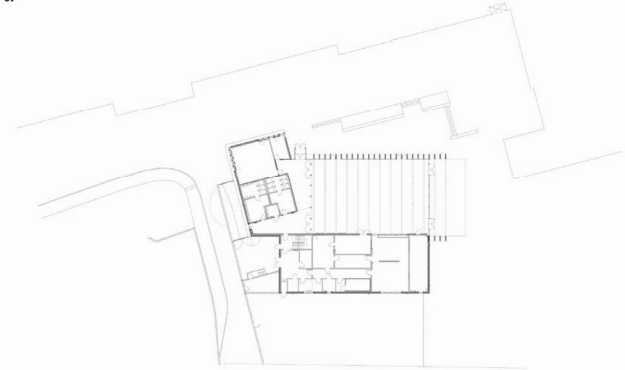


The most recent extension to the school complex in Ilsede is intended as the final element of a heterogeneous mix of architectural styles that has been created over the past century, largely defined by the use of brick. The new section – a closed, sparingly perforated brick front – blends in well with neighboring residential buildings. Remaining didactically true to the tectonic evolution of Bockhorn brick, the architects used this material not as a load-bearing façade but rather in stacked construction. The fact that the brick appears both on the interior and exterior is a testament to its legendary virtues as an insulator.

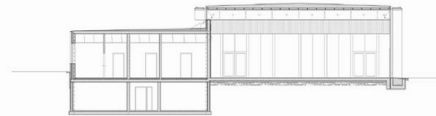




07



08



01 Exterior view from the square
 02 Exterior view 03 Detail of fa-
 çade 04 Entrance area 05 Interior
 view, brick wall 06 Detail of façade
 07 Ground floor plan 08 Sections